



LV JUICE

PU Lid Floor Outlet Box

Our plastic floor outlet boxes are an ideal way to supply power, data and A/V to open floors of a commercial office building or residential home.

POWDER COATED ZINC ANNEALED STEEL BODY

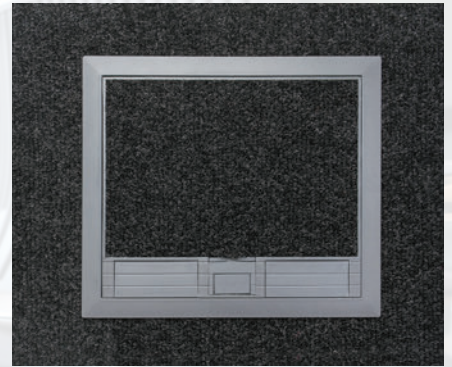
9MM RECESSED PLASTIC LID

20MM AND 25MM KNOCKOUTS PROVIDED FOR EASY CONDUIT ENTRY

DUAL CABLE EXIT FLAPS

FOUR AUTO SWITCHED POWER OUTLETS SUPPLIED

PROVISION FOR EIGHT CAT5 OR CAT6 DATA PORTS



SHARP FBPL4P8D-NZ
PRICE \$299 +GST

Better Cable Management



This Month

TERRIFIC TAPE

PAGE 2

EXPLOSION-PROOF PLUGS & SOCKETS

PAGE 6

FREE WIRELESS HEADPHONES WITH 15 PACKS OF TEST TAGS

PAGE 8

100% NEW ZEALAND OWNED

FREE BAG OF PARTY MIX LOLLIES
WHILE STOCKS LAST



When you spend over \$300 (excl GST) on one invoice this month



HOOK & LOOP TAPE

This continuous reel of back to back grip hook and loop reduces waste, allowing you to cut to the required length onsite. Offers a secure but gentle cable support. Reusable over and over, simply open and refasten as required.

Also available in premium Cable Away grade - contact us for more information.



Cat No.	Width (mm)	Roll Length (m)
TNHL1225	12	25
TNHL1250	12	50
TNHL2025	20	25

FROM
\$20.50
+ GST

DOUBLE SIDED TAPE

Used for holding, joining or bonding a wide variety of surfaces, this double sided tape is available in three sizes and boasts an aggressive adhesive for strength and durability. Fast and easy to install, this cost effective fastener is versatile and reliable.

Adhesion = 0.25kg/cm²

Colour = White



Cat No.	Width (mm)	Roll Length (m)
TNDST12	12	10
TNDST18	18	10
TNDST24	24	10

FROM
\$10.00
+ GST

PVC DUCT TAPE

Plasticised PVC Film coated with a high tack pressure sensitive natural rubber adhesive. Used for joining, patching and repairing polythene/plastic films and ducts. Excellent conformability and durability, good UV and water resistance, suitable for exterior use.



TECHNICAL DATA

- Backing PVC Film
- Adhesive Natural Rubber – Excellent bonding power
- 0.13mm Tape thickness
- Silver colour
- 6N/25mm Adhesion
- 150% Elongation
- 80°C Temperature resistance

Cat No.	Width (mm)	Roll Length (m)
DT48	48	30

Product # DT48

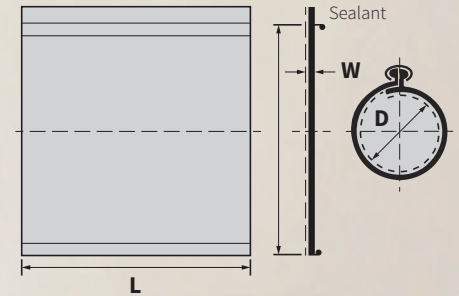
\$6.00
+ GST

HEATSHRINKABLE WRAP-AROUND REPAIR SLEEVES



CRSM wrap-arounds are a fast and permanent cable repair and sealing system. The repair sleeve is quickly fitted in place by means of its rail and channel closure. This labour-saving installation fits and seals all in one step. CRSM wrap-arounds are abrasion and corrosion resistant, and each size covers a range of cable sizes.

Raychem's distinctive closure system, which incorporates a stainless steel channel slid over rails on the sleeve, keeps the wrap-around in place during installation but can be easily removed when the adhesive has set.



RANGE COVERS FROM 11MM UP TO 150MM OD
AVAILABLE IN 300, 500 & 1500MM LENGTHS

APPLICATIONS

- Repair cable sheath damage without cutting cable
- Underground joint sheath reinstatement (& in tight areas)
- Sealing cable glands

TECHNICAL DATA

- Operating temperature range -40°C to 120°C
- Shrink ratio 3:1
- Adhesive lined
- Halogen free
- Abrasion, corrosion & decay resistant
- IP68
- 100% waterproof
- UV resistant
- Voltage class 1kV

Cat No.	Application Range Diameter (mm)	Inside Dia. D (mm)		Wall Thickness W (mm)		Length L (mm)
		Min A	Max B	Min A	Max B	
CRSM-34/10-300	11-21	35	9	0.3	2.4	300
CRSM-53/13-300	17-32	54	15	0.3	2.0	
CRSM-84/20-300	24-50	86	21	0.3	2.0	
CRSM-107/29-300	31-65	108	27	0.3	2.0	
CRSM-143/36-300	40-115	144	28	0.3	1.8	
CRSM-198/55-300	56-120	203	50	0.3	2.1	500
CRSM-250/98-300	103-150	257	91	0.4	1.7	
CRSM-34/10-500	11-21	35	9	0.3	2.4	
CRSM-53/13-500	17-32	54	15	0.3	2.0	
CRSM-107/29-500	31-65	108	27	0.3	2.0	
CRSM-143/36-500	40-115	144	28	0.3	1.8	1500
CRSM-198/55-500	56-120	203	50	0.3	2.1	
CRSM-34/10-1500	11-21	35	9	0.3	2.4	
CRSM-53/13-1500	17-32	54	15	0.3	2.0	
CRSM-84/20-1500	24-50	86	21	0.3	2.0	
CRSM-107/29-1500	31-65	108	27	0.3	2.0	1500
CRSM-143/36-1500	40-115	144	28	0.3	1.8	
CRSM-198/55-1500	56-120	203	50	0.3	2.1	
CRSM-250/98-1500	103-150	257	91	0.4	1.7	

*Other lengths available on request

Raychem
 from TE Connectivity

Note: 1. Dimensions in millimetres
 A = as supplied

2. Max. Longitudinal change after free recovery: 0 - +10%
 B = after heating



FIND OUT MORE ABOUT CRSM ON **YOUTUBE**



RAYCHEM GAS TORCH SETS BY TE

STANDARD

#GASSETSTD
\$313.17
 + GST



Featuring a plastic composite single valve handle with high quality brass metal parts, this set is suitable for rapid installation of heat-shrinkable materials. It offers maximum burning efficiency and the best available balance of surface pre-heat.

Both Sets include

- Standard or Piezo handle
- 5m long high pressure hose
- BN38 38mm nozzle



PROMATIC

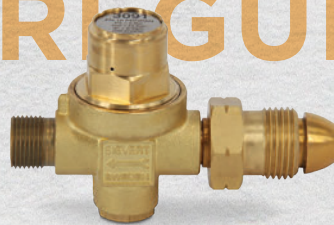
#GASSETPIEZO
\$599.72
 + GST



With patented Piezo electric ignition, universal handle, advanced design, and ergonomic appearance, the Promatic is a world-beating system for all possible heating tasks where efficiency and professional workmanship are needed.

REGULATOR

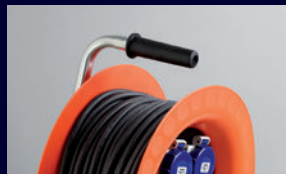
#REGULATOR
\$120.61
 + GST



Compatible with all FH-1630 hoses, this regulator is suitable for propane gas bottles from 5kg

to 11kg and creates a constant 2 bar pressure between your torch and gas bottle.

FAMATEL IP67 INDUSTRIAL CABLE REEL



Handle with rubber coating for perfect portability.



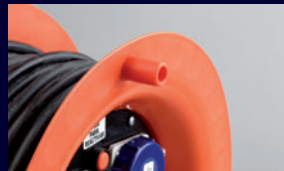
Industrial IP67 plugs and sockets guarantee maximum security in harsh environments.



Automatic cut-out.



Adjustable brake for cable reeling.



Crank for easy handling.



Cable exit to help the cable reeling.

Degree of protection: IP67
 Impact resistance: IK06
 Dimensional stability: -25°C +85°C
 Glow wire test: 750°C active parts
 Standard: 650°C other parts
 EN61242



Cat No.	Cable	Input Plug	Socket Outputs
FAM30002	30 M H07RN-F 3 X 2.5 MM ²	IP67 INDUSTRIAL CEE 2P+E 16/250V	3 INDUSTRIAL CEE IP67 2P+E 16A/250V



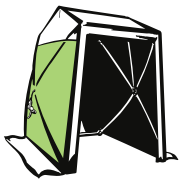


Get the work done, rain or shine



FEATURES

- No loose pieces to lose
- Set up or take down in 30 seconds by yourself
- UV & flame resistant
- Range of door designs
- Add your company logo
- Durable construction, stands up to strong winds
- Pre-set and custom sizes available
- Single and two door options available
- Quick Pak Flap for easy storage and transport



POP'N'WORK

Industrial Pop-Up Shelters & Umbrellas for Weather Protection

Pop'N'Work offers a complete range of quick & easy pop-up work shelters. The high quality & durability of these products is unsurpassed!

With the design flexibility to meet specific client needs we have

the ability to provide you with a truly customised, quality product. Customisations include branding with your logo or changing to your colours (MOQ required).

Job safety & productivity are

top level concerns for any business, & these products offer features that help to increase production levels while providing a safer working environment!



Ground Tents, Dielectric Aerial Tents, Canopies, Umbrellas, Customisation



Watch how to set
up a Pop'N'Work
tent on Youtube





These full plastic explosion-proof plug and sockets can be used in explosive gas atmospheres where machinery or appliances need to be moved or transported.

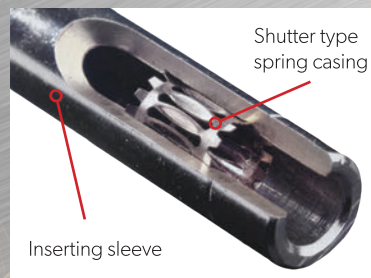
The flexible shutter spring has a large contact surface area, and can guarantee a low contact resistance between the plug and socket, while ensuring the force required to connect and disconnect the plug is kept to a minimum.

The exclusive interlock design is equipped to the plug and socket. To energise, the plug must be inserted and then rotated. The plug cannot be disconnected while energised.

The protective covers are equipped on both the plug and socket, which ensures the IECEx certification is maintained under even the harshest conditions.

FEATURES

- IECEx & ATEX international certification
- Self-Cleaning plug sleeve - low transmission resistance
- Protective covers ensure high degree of protection is maintained
- Low force required to connect, energise, de-energise and disconnect



CONTACT US FOR MORE INFO



ACOUSTIC FIRE PAD

These non-setting intumescent putty sheets are designed to be a cost-effective and efficient method of firestopping electrical sockets in dry wall fire-rated partitions.

FEATURES

- Up to 1 hour fire protection
- Choice of installation methods
- Simple to install
- Suitable for most drywall applications
- Acoustic rated with weighted sound reduction index of 65 in accordance with EN/ISO 7171-1
- Tested to AS1530.4-2005 & AS4072.1-2005
- Sound Transmission Class: 60

APPLICATIONS

Acoustic Fire Pads can be fitted around the outside of a metal TransNet flush box to achieve both an Acoustic and Fire rating.

These pads are rot proof, do not sustain vermin, and will not encourage the growth of fungi, mould, or bacteria. They are not a health, spill, or environmental hazard.

ACOUSTIC ASSESSMENT IN DRYLINING PARTITION

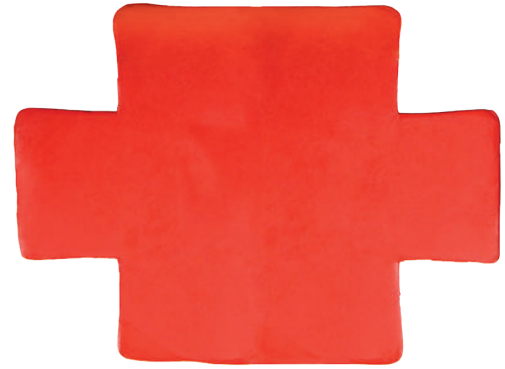
Based on airborne sound insulation measurement results contained in BRE Report 224463 from laboratory tests done on three electrical sockets lined with 2mm Firetherm Putty Pads.

R _w dB	R _w +C _{tr} dB
65	57

Three electrical sockets lined with 2mm Firetherm Putty Pads were installed on both sides of the partition.

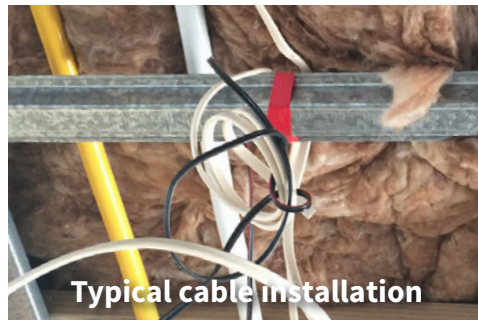
R_w Weighted sound reduction index: A single number quantity that characterises the airborne sound insulation of a material or building element in the laboratory.

R_w + C_{tr} Single number quantity that characterises the A-weighted level difference between source and receive rooms when the sound source has the spectral content of road traffic noise.



Cat No.	Description
FTPPADLGE	ACOUSTIC PUTTY PAD LARGE/EXTERNAL

WELL-HUNG CABLE SUPPORT BRACKET



Are You Well-Hung

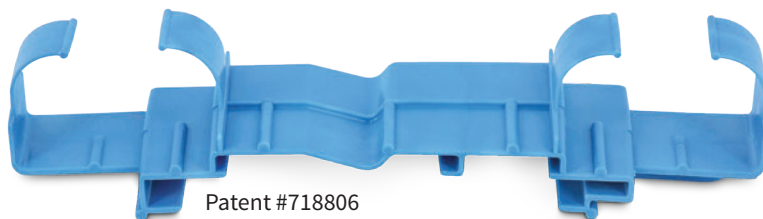
Well-Hung Support Bracket

NZ designed and manufactured, the Well-Hung Support Bracket facilitates effortless installation of electrical and data cables on metal formed and wooden ceiling and wall battens. The bracket clips or screws to a multitude of batten profiles and trusses, ensuring cables are contained safely within the bracket catchment rather than landing

in the batten tray - avoiding the risk of electrocution from screws penetrating up through them.

Features

- Cables securely contained
- Quick and easy to install
- Reduced labour costs
- Ensures tidy wiring



FREE PACK OF CHOCOLATE BLUEBERRIES
with every box of 100 Well-Hung sold this month

Proudly supporting:



LIKE THE SOUND OF THIS PROMO?

Tag & Snag This May To Find Out



TransNet New Zealand Ltd

Auckland

78 Cryers Road
East Tamaki
Auckland
NEW ZEALAND
Ph 0800 442 182
Fax 0800 442 183
PO Box 39 383
Howick, Auckland

Wellington

10 Petone Ave
Petone
Wellington
NEW ZEALAND
Ph 04 576 2530
Fax 04 576 0040
PO Box 39 383
Howick, Auckland

NEW ZEALAND

sales@transnet.co.nz

TransNet Tonga

Ma'ufanga

Small Industries
Ma'ufanga
TONGA
Ph +67 627 939
Fax +67 627 976
PO Box 2932
Nukualofa

TONGA

transnet@kalianet.to



BUY 15 PACKS
OF TEST TAGS
THIS MONTH

FEATURES

- Unique tag numbers aid record keeping
- Laminated with a seal down security flap
- Self Laminating to protect printed information
- UV stable
- Supplied in re-sealable packs of 100 with permanent marking pen
- All tags manufactured to AS/NZS 3760 & AS/NZS 3012

RECEIVE A PAIR
OF PANASONIC
RP-HF400B WIRELESS
HEADPHONES
FREE*



*While stocks last.
Promotion runs from 1 May
2018 to 31 May 2018.

TransNet NZ Ltd has made every reasonable effort to ensure the accuracy of this information and it is to the best of our knowledge correct and reliable. Under no circumstances does this constitute an assurance of any particular quality or performance and users should independently evaluate the suitability of products for their desired application. All information in this publication including pricing, drawings, illustrations, images and graphic designs are reflections of our current understanding. TransNet NZ Ltd reserves the right to make any adjustment to this information at any time. Our liability for the products outlined in this publication is set forth in our standard terms and conditions of trade. In case of any potential ambiguities or questions, please contact us for clarification.

